



PAMIBIA UNIVERSITY
OF SCIENCE AND TECHNOLOGY
FACULTY OF HEALTH, APPLIED SCIENCES AND NATURAL RESOURCES
DEPARTMENT OF MATHEMATICS AND STATISTICS

QUALIFICATION: BACHELOR OF ECONOMICS	
QUALIFICATION CODE: 07BECO	LEVEL: 5
COURSE CODE: SFE611S	COURSE NAME: STATISTICS FOR ECONOMIST
SESSION: JULY 2022	PAPER: THEORY
DURATION: 3 Hrs	MARKS: 100

SECOND OPPORTUNITY/SUPPLEMENTARY EXAMINATION QUESTION PAPER	
EXAMINER	Mr J. Amunyele
MODERATOR:	Mr A. Roux

INSTRUCTIONS
<ol style="list-style-type: none">1. Answer ALL the questions in the booklet provided.2. Show clearly all the steps used in the calculations (SECTION B).3. All written work must be done in blue or black ink and sketches must be done in pencil.

ATTACHMENT: T-Table, Z-Tables, Chi-square
PERMISSIBLE MATERIALS

1. Non-programmable calculator without a cover.

THIS QUESTION PAPER CONSISTS OF 6 PAGES (Including this front page)

SECTION A

QUESTION 1 [22 MARKS]

(Write down the question number and the letter corresponding to your best option)

1.1 A random sample of size $n = 11$ was selected from a population and the data are as follows: 29,30, 45, 23, 51, 82 ,69, 12 ,71 ,65, 39. Use this dataset to answer questions 1.1.1 and 1.1.3

1.1.1 The point estimate for the mean is [2]

- A. 50.5
- B. 12
- C. 46.91
- D. 45.47
- E. 47.45

1.1.2 The standard deviation of the sample mean is equal to [2]

- A. 50.3
- B. 6.7
- C. 71.6
- D. 22.6
- E. 6.8

1.1.3 What is the range of the dataset above [2]

- A. 70
- B. 59
- C. 40
- D. 11
- E. 0

1.2 Which of the following hypothesis test can be used in statistics when $n = 34$ and $\sigma = 29$? [2]

- A. T-test
- B. Z-test
- C. one-way ANOVA
- D. Kruskal-Wallis test
- E. chi-square test

- 1.3 A research firm conducted a survey to determine the mean amount of money steady smokers spend on cigarettes during a week. They found the distribution of amounts spent per week followed a normal distribution with a standard deviation of N\$5. A random sample of 49 steady smokers revealed that $\bar{x} = N\$20$. Determine the 95% confidence interval for μ : [3]
- A. (18.60; 25;40)
 - B. (19.37; 20.63)
 - C. (20; 1.40)
 - D. (19.83; 20.17)
 - E. (18.6; 21.40)
- 1.4 If A and B are any two arbitrary events and $P(A \cap B) = P(A) \times P(B)$, then the following is true about events A and B [2]
- A. Event A and B are collectively exhaustive
 - B. Event A and B are mutual exclusive
 - C. Events A and B are independent
 - D. Events A and B are dependent
 - E. None
- 1.5 If a variable X represent the annual income per person in an organization, then X is a _____ random variable [2]
- A. continuous
 - B. descriptive
 - C. discrete
 - D. normal
 - E. none
- 1.6 A new vaccine introduced for foot & mouth disease will either cure it or not, this is a possible application of; [2]
- A. Poisson distribution
 - B. Normal distribution
 - C. Binomial distribution
 - D. Z-distribution
 - E. none
- 1.7 In a Poisson distribution the mean (μ) for a random variable x is the same as; [2]
- A. Variance (σ^2)
 - B. Standard deviation (σ)
 - C. Number of success
 - D. Number of occurrences

E. none

1.8 What is the probability of getting one success in five observations if the probability of a success is 0.1 [3]

A. 0.066

B. 0.328

C. 0.933

D. 0.234

E. none

SECTION B

(Attempt all questions and show all your working)

QUESTION 2 [46 MARKS]

2.1 The annual rainfall figures (in mm) for the past 20 years for Tsumeb are given below:

142	133	138	127	148	154	161	155	131	176
152	136	129	121	128	162	145	133	137	132

2.1.1 Determine the range for the rainfall data. [2]

2.1.2 Group the data into a grouped frequency distribution with a lowest class lower limit of 120 mm and a class width of 10 mm. **(NB include class, frequency, and relative frequency)**

2.1.3 What percentage of the rain fall was received between 160 mm to 170 mm? [7]

2.2 Cabbage is among the highest nitrates containing vegetarian food available in terms of quantity. The following table present the distribution of nitrates in grams that was measured from 29 cabbages. [2]

Nitrates contents (in grams)	Frequency
0-<9	4
9-<18	3
18-<27	9
27-<36	7
36-<45	6

2.2.1 Estimate the mean nitrate for the cabbages [4]

- 2.2.2 Estimate the median nitrate for the cabbages [4]
- 2.2.3 Estimate the mode nitrate for the cabbages [4]
- 2.2.4 Estimate the variance and the standard deviation of nitrate for the cabbages [6]

2.3 Suppose you and a friend have contributed equally to a portfolio of \$10 000 invested in a risky venture. The income X that will be earned on this portfolio over the next year has the following probability distribution.

X	\$500	\$100	\$2000
P(X)	0.5	0.3	0.2

- 2.3.1 Determine the expected value and variance of the income earned on this portfolio. [5]
- 2.3.2 Determine the expected value of your share (one half) of the income. [2]
- 2.4 It is known that 80% of all business startups in the IT industry report that they generate a profit in their first year. If a sample of 10 new IT business startups is selected, find the probability that:
 - 2.4.1 Exactly seven will generate a profit in their first year [2]
 - 2.4.2 At least nine will generate a profit in their first year [4]
 - 2.4.3 $P(7 \leq X \leq 8)$ [4]

Question 3 (32 marks)

- 3.1 You sample 34 oranges from your farm’s harvest of over 500 000 oranges. The mean weight of the sample is 110 grams. The population standard deviation and mean are 30 grams and 115 grams respectively. What is the probability that the mean weight of all 500 000 oranges is less than 110 grams? [3]
- 3.2 During July 2018, tomatoes yield figures (in tons) were recorded over 10 farms around Tsumeb.

Farm	A	B	C	D	E	F	G	H	I	J
Tomato yield (ton)	35	21	33	24	30	36	27	39	25	26

- 3.2.1. Construct a 95% confidence interval to estimate the true mean tomato yield in

- Tsumeb. [8]
- 3.2.2 Is this a T-statistic or a Z statistic, and why? [2]
- 3.2.3 At the 5% level of significance test the hypothesis that the mean tomato yield around Tsumeb is below 30 ton. [6]
- 3.3 The variance protein content (in mg) of a random sample of 10 bags of beans was found to be 0.67 mg.
- 3.3.1 Estimate the variance for protein content of the entire population of beans with a 95% degree of confidence. [7]
- 3.3.2 Can we conclude that the population protein variance for the beans is less than 1.05 mg? use $\alpha = 0.05$ [6]

END OF EXAMINATION QUESTION PAPER

TABLE of CRITICAL VALUES for STUDENT'S *t* DISTRIBUTIONS

Column headings denote probabilities (α) above tabulated values.

d.f.	0.40	0.25	0.10	0.05	0.04	0.025	0.02	0.01	0.005	0.0025	0.001	0.0005
1	0.325	1.000	3.078	6.314	7.916	12.706	15.894	31.821	63.656	127.321	318.289	636.578
2	0.289	0.816	1.886	2.920	3.320	4.303	4.849	6.965	9.925	14.089	22.328	31.600
3	0.277	0.765	1.638	2.353	2.605	3.182	3.482	4.541	5.841	7.453	10.214	12.924
4	0.271	0.741	1.533	2.132	2.333	2.776	2.999	3.747	4.604	5.598	7.173	8.610
5	0.267	0.727	1.476	2.015	2.191	2.571	2.757	3.365	4.032	4.773	5.894	6.869
6	0.265	0.718	1.440	1.943	2.104	2.447	2.612	3.143	3.707	4.317	5.208	5.959
7	0.263	0.711	1.415	1.895	2.046	2.365	2.517	2.998	3.499	4.029	4.785	5.408
8	0.262	0.706	1.397	1.860	2.004	2.306	2.449	2.896	3.355	3.833	4.501	5.041
9	0.261	0.703	1.383	1.833	1.973	2.262	2.398	2.821	3.250	3.690	4.297	4.781
10	0.260	0.700	1.372	1.812	1.948	2.228	2.359	2.764	3.169	3.581	4.144	4.587
11	0.260	0.697	1.363	1.796	1.928	2.201	2.328	2.718	3.106	3.497	4.025	4.437
12	0.259	0.695	1.356	1.782	1.912	2.179	2.303	2.681	3.055	3.428	3.930	4.318
13	0.259	0.694	1.350	1.771	1.899	2.160	2.282	2.650	3.012	3.372	3.852	4.221
14	0.258	0.692	1.345	1.761	1.887	2.145	2.264	2.624	2.977	3.326	3.787	4.140
15	0.258	0.691	1.341	1.753	1.878	2.131	2.249	2.602	2.947	3.286	3.733	4.073
16	0.258	0.690	1.337	1.746	1.869	2.120	2.235	2.583	2.921	3.252	3.686	4.015
17	0.257	0.689	1.333	1.740	1.862	2.110	2.224	2.567	2.898	3.222	3.646	3.965
18	0.257	0.688	1.330	1.734	1.855	2.101	2.214	2.552	2.878	3.197	3.610	3.922
19	0.257	0.688	1.328	1.729	1.850	2.093	2.205	2.539	2.861	3.174	3.579	3.883
20	0.257	0.687	1.325	1.725	1.844	2.086	2.197	2.528	2.845	3.153	3.552	3.850
21	0.257	0.686	1.323	1.721	1.840	2.080	2.189	2.518	2.831	3.135	3.527	3.819
22	0.256	0.686	1.321	1.717	1.835	2.074	2.183	2.508	2.819	3.119	3.505	3.792
23	0.256	0.685	1.319	1.714	1.832	2.069	2.177	2.500	2.807	3.104	3.485	3.768
24	0.256	0.685	1.318	1.711	1.828	2.064	2.172	2.492	2.797	3.091	3.467	3.745
25	0.256	0.684	1.316	1.708	1.825	2.060	2.167	2.485	2.787	3.078	3.450	3.725
26	0.256	0.684	1.315	1.706	1.822	2.056	2.162	2.479	2.779	3.067	3.435	3.707
27	0.256	0.684	1.314	1.703	1.819	2.052	2.158	2.473	2.771	3.057	3.421	3.689
28	0.256	0.683	1.313	1.701	1.817	2.048	2.154	2.467	2.763	3.047	3.408	3.674
29	0.256	0.683	1.311	1.699	1.814	2.045	2.150	2.462	2.756	3.038	3.396	3.660
30	0.256	0.683	1.310	1.697	1.812	2.042	2.147	2.457	2.750	3.030	3.385	3.646
31	0.256	0.682	1.309	1.696	1.810	2.040	2.144	2.453	2.744	3.022	3.375	3.633
32	0.255	0.682	1.309	1.694	1.808	2.037	2.141	2.449	2.738	3.015	3.365	3.622
33	0.255	0.682	1.308	1.692	1.806	2.035	2.138	2.445	2.733	3.008	3.356	3.611
34	0.255	0.682	1.307	1.691	1.805	2.032	2.136	2.441	2.728	3.002	3.348	3.601
35	0.255	0.682	1.306	1.690	1.803	2.030	2.133	2.438	2.724	2.996	3.340	3.591
36	0.255	0.681	1.306	1.688	1.802	2.028	2.131	2.434	2.719	2.990	3.333	3.582
37	0.255	0.681	1.305	1.687	1.800	2.026	2.129	2.431	2.715	2.985	3.326	3.574
38	0.255	0.681	1.304	1.686	1.799	2.024	2.127	2.429	2.712	2.980	3.319	3.566
39	0.255	0.681	1.304	1.685	1.798	2.023	2.125	2.426	2.708	2.976	3.313	3.558
40	0.255	0.681	1.303	1.684	1.796	2.021	2.123	2.423	2.704	2.971	3.307	3.551
60	0.254	0.679	1.296	1.671	1.781	2.000	2.099	2.390	2.660	2.915	3.232	3.460
80	0.254	0.678	1.292	1.664	1.773	1.990	2.088	2.374	2.639	2.887	3.195	3.416
100	0.254	0.677	1.290	1.660	1.769	1.984	2.081	2.364	2.626	2.871	3.174	3.390
120	0.254	0.677	1.289	1.658	1.766	1.980	2.076	2.358	2.617	2.860	3.160	3.373
140	0.254	0.676	1.288	1.656	1.763	1.977	2.073	2.353	2.611	2.852	3.149	3.361
160	0.254	0.676	1.287	1.654	1.762	1.975	2.071	2.350	2.607	2.847	3.142	3.352
180	0.254	0.676	1.286	1.653	1.761	1.973	2.069	2.347	2.603	2.842	3.136	3.345
200	0.254	0.676	1.286	1.653	1.760	1.972	2.067	2.345	2.601	2.838	3.131	3.340
250	0.254	0.675	1.285	1.651	1.758	1.969	2.065	2.341	2.596	2.832	3.123	3.330
inf	0.253	0.674	1.282	1.645	1.751	1.960	2.054	2.326	2.576	2.807	3.090	3.290

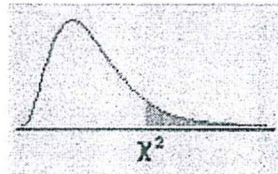
Z - Table

The table shows cumulative probabilities for the standard normal curve.

Cumulative probabilities for **NEGATIVE** z-values are shown first. **SCROLL DOWN** to the 2nd page for **POSITIVE** z

z	.00	.01	.02	.03	.04	.05	.06	.07	.08	.09
-3.4	.0003	.0003	.0003	.0003	.0003	.0003	.0003	.0003	.0003	.0002
-3.3	.0005	.0005	.0005	.0004	.0004	.0004	.0004	.0004	.0004	.0003
-3.2	.0007	.0007	.0006	.0006	.0006	.0006	.0006	.0005	.0005	.0005
-3.1	.0010	.0009	.0009	.0009	.0008	.0008	.0008	.0008	.0007	.0007
-3.0	.0013	.0013	.0013	.0012	.0012	.0011	.0011	.0011	.0010	.0010
-2.9	.0019	.0018	.0018	.0017	.0016	.0016	.0015	.0015	.0014	.0014
-2.8	.0026	.0025	.0024	.0023	.0023	.0022	.0021	.0021	.0020	.0019
-2.7	.0035	.0034	.0033	.0032	.0031	.0030	.0029	.0028	.0027	.0026
-2.6	.0047	.0045	.0044	.0043	.0041	.0040	.0039	.0038	.0037	.0036
-2.5	.0062	.0060	.0059	.0057	.0055	.0054	.0052	.0051	.0049	.0048
-2.4	.0082	.0080	.0078	.0075	.0073	.0071	.0069	.0068	.0066	.0064
-2.3	.0107	.0104	.0102	.0099	.0096	.0094	.0091	.0089	.0087	.0084
-2.2	.0139	.0136	.0132	.0129	.0125	.0122	.0119	.0116	.0113	.0110
-2.1	.0179	.0174	.0170	.0166	.0162	.0158	.0154	.0150	.0146	.0143
-2.0	.0228	.0222	.0217	.0212	.0207	.0202	.0197	.0192	.0188	.0183
-1.9	.0287	.0281	.0274	.0268	.0262	.0256	.0250	.0244	.0239	.0233
-1.8	.0359	.0351	.0344	.0336	.0329	.0322	.0314	.0307	.0301	.0294
-1.7	.0446	.0436	.0427	.0418	.0409	.0401	.0392	.0384	.0375	.0367
-1.6	.0548	.0537	.0526	.0516	.0505	.0495	.0485	.0475	.0465	.0455
-1.5	.0668	.0655	.0643	.0630	.0618	.0606	.0594	.0582	.0571	.0559
-1.4	.0808	.0793	.0778	.0764	.0749	.0735	.0721	.0708	.0694	.0681
-1.3	.0968	.0951	.0934	.0918	.0901	.0885	.0869	.0853	.0838	.0823
-1.2	.1151	.1131	.1112	.1093	.1075	.1056	.1038	.1020	.1003	.0985
-1.1	.1357	.1335	.1314	.1292	.1271	.1251	.1230	.1210	.1190	.1170
-1.0	.1587	.1562	.1539	.1515	.1492	.1469	.1446	.1423	.1401	.1379
-0.9	.1841	.1814	.1788	.1762	.1736	.1711	.1685	.1660	.1635	.1611
-0.8	.2119	.2090	.2061	.2033	.2005	.1977	.1949	.1922	.1894	.1867
-0.7	.2420	.2389	.2358	.2327	.2296	.2266	.2236	.2206	.2177	.2148
-0.6	.2743	.2709	.2676	.2643	.2611	.2578	.2546	.2514	.2483	.2451
-0.5	.3085	.3050	.3015	.2981	.2946	.2912	.2877	.2843	.2810	.2776
-0.4	.3446	.3409	.3372	.3336	.3300	.3264	.3228	.3192	.3156	.3121
-0.3	.3821	.3783	.3745	.3707	.3669	.3632	.3594	.3557	.3520	.3483
-0.2	.4207	.4168	.4129	.4090	.4052	.4013	.3974	.3936	.3897	.3859
-0.1	.4602	.4562	.4522	.4483	.4443	.4404	.4364	.4325	.4286	.4247
0.0	.5000	.4960	.4920	.4880	.4840	.4801	.4761	.4721	.4681	.4641

APPENDIX E: The Chi-Square Distribution



dfp	.995	.990	.975	.950	.900	.750	.500	.250	.100	.050	.025	.010	.005
1	0.00004	0.00016	0.00098	0.00393	0.01579	0.10153	0.45494	1.32330	2.70554	3.84146	5.02389	6.63490	7.87944
2	0.01003	0.02010	0.05064	0.10259	0.21072	0.57536	1.38629	2.77259	4.60517	5.99146	7.37776	9.21034	10.59663
3	0.07172	0.11483	0.21580	0.35185	0.58437	1.21253	2.36597	4.10834	6.25139	7.81473	9.34840	11.34487	12.83816
4	0.20699	0.29711	0.48442	0.71072	1.06562	1.92256	3.35669	5.38527	7.77944	9.48773	11.14329	13.27670	14.86026
5	0.41174	0.55430	0.83121	1.14548	1.61031	2.67460	4.35146	6.62568	9.23636	11.07050	12.83250	15.08627	16.74960
6	0.67573	0.87209	1.23734	1.63538	2.20413	3.45460	5.34812	7.84080	10.64464	12.59159	14.44938	16.81189	18.54758
7	0.98926	1.23904	1.68987	2.16735	2.83311	4.25485	6.34581	9.03715	12.01704	14.06714	16.01276	18.47531	20.27774
8	1.34441	1.64650	2.17973	2.73264	3.48954	5.07064	7.34412	10.21885	13.36157	15.50731	17.53455	20.09024	21.95495
9	1.73493	2.08790	2.70039	3.32511	4.16816	5.89883	8.34283	11.38875	14.68366	16.91898	19.02277	21.66599	23.58935
10	2.15586	2.55821	3.24697	3.94030	4.86518	6.73720	9.34182	12.54886	15.98718	18.30704	20.48318	23.20925	25.18818
11	2.60322	3.05348	3.81575	4.57481	5.57778	7.58414	10.34100	13.70069	17.27501	19.67514	21.92005	24.72497	26.75685
12	3.07382	3.57057	4.40379	5.22603	6.30380	8.43842	11.34032	14.84540	18.54935	21.02607	23.33666	26.21697	28.29952
13	3.56503	4.10692	5.00875	5.89186	7.04150	9.29907	12.33976	15.98391	19.81193	22.36203	24.73560	27.68825	29.81947
14	4.07467	4.66043	5.62873	6.57063	7.78953	10.16531	13.33927	17.11693	21.06414	23.68479	26.11895	29.14124	31.31935
15	4.60092	5.22935	6.26214	7.26094	8.54676	11.03654	14.33886	18.24509	22.30713	24.99579	27.48839	30.57791	32.80132
16	5.14221	5.81221	6.90766	7.96165	9.31224	11.91222	15.33850	19.36886	23.54183	26.29623	28.84535	31.99993	34.26719
17	5.69722	6.40776	7.56419	8.67176	10.08519	12.79193	16.33818	20.48868	24.76904	27.58711	30.19101	33.40866	35.71847
18	6.26480	7.01491	8.23075	9.39046	10.86494	13.67529	17.33790	21.60489	25.98942	28.86930	31.52638	34.80531	37.15645
19	6.84397	7.63273	8.90652	10.11701	11.65091	14.56200	18.33765	22.71781	27.20357	30.14353	32.85233	36.19087	38.58226
20	7.43384	8.26040	9.59078	10.85081	12.44261	15.45177	19.33743	23.82769	28.41198	31.41043	34.16961	37.56623	39.99685
21	8.03365	8.89720	10.28290	11.59131	13.23960	16.34438	20.33723	24.93478	29.61509	32.67057	35.47888	38.93217	41.40106
22	8.64272	9.54249	10.98232	12.33801	14.04149	17.23962	21.33704	26.03927	30.81328	33.92444	36.78071	40.28936	42.79565
23	9.26042	10.19572	11.68855	13.09051	14.84796	18.13730	22.33688	27.14134	32.00690	35.17246	38.07563	41.63840	44.18128
24	9.88623	10.85636	12.40115	13.84843	15.65868	19.03725	23.33673	28.24115	33.19624	36.41503	39.36408	42.97982	45.55851
25	10.51965	11.52398	13.11972	14.61141	16.47341	19.93934	24.33659	29.33885	34.38159	37.65248	40.64647	44.31410	46.92789
26	11.16024	12.19815	13.84390	15.37916	17.29188	20.84343	25.33646	30.43457	35.56317	38.88514	41.92317	45.64168	48.28988
27	11.80759	12.87850	14.57338	16.15140	18.11390	21.74940	26.33634	31.52841	36.74122	40.11327	43.19451	46.96294	49.64492
28	12.46134	13.56471	15.30786	16.92788	18.93924	22.65716	27.33623	32.62049	37.91592	41.33714	44.46079	48.27824	50.99338
29	13.12115	14.25645	16.04707	17.70837	19.76774	23.56659	28.33613	33.71091	39.08747	42.55697	45.72229	49.58788	52.33562
30	13.78672	14.95346	16.79077	18.49266	20.59923	24.47761	29.33603	34.79974	40.25602	43.77297	46.97924	50.89218	53.67196